

Omeme and District Horticultural Society



Since 1939



Dedication September 2011



Photo by Diane Webber

2012

Web Site: <http://www.gardenontario.org/site.php/omeme>

Message from our Presidents



Welcome to everyone in the Omemee and District Horticultural Society as we look back over and look forward to another great year of Gardening.

Our Executive and Directors have planned a wonderful year of exciting speakers, garden tours, flower, vegetable and photography shows as well as plant sales and exchanges, a silent auction and the opportunity to work as a team taking care of the village gardens and planters.

We owe an enormous thank you to all of the leaders and volunteers who generously gave of their time and talent to help achieve so many goals in 2011 despite very challenging weather conditions.

A remarkable Memorial Garden was designed, developed and planted at the Omemee Legion to honour two young fallen soldiers who died in 2008. An emotional service of Remembrance and Dedication, followed by a reception, was hosted for the family and community members.

The Junior Garden Club celebrated 65 years (1946-2011) at the August Flower Show with 17 boys and girls bringing in 100 show entries. Special prizes and refreshments marked this milestone year for the Juniors.

Colourful new signs were handmade to advertise our gigantic May Plant Sale and identify the individual plant categories. The Sale was a huge success!

Our hard working volunteers maintained 9 Village gardens and 30 planters featuring spring then summer and finally winter designs.

We participated in the Communities in Bloom event by hosting the national judges for the 10th year and once again winning the 5 Bloom Award. For the third time in ten years the City of Kawartha Lakes won the National Community of Gardeners Award for volunteering. Thanks to you volunteers for helping us to accumulate 3848 hours in 2011.

We had enthusiastic members attending the District events at the April AGM, the June Celebration Luncheon, the OHA convention in Sudbury and the Fall seminar and walk with our Award winning float in the Santa Claus Parade.

In 1939, 73 years ago the charter members began to beautify this community and that mandate continues to motivate us in 2012.

We look forward to meeting, working, garden touring, plant shopping and socializing together. We have a thriving club and we always welcome new members to join us.

Please invite your friends and neighbours, whether they are beginners or experienced gardeners to come and join us at a meeting. We look forward to greeting you. Happy Gardening in 2012!

As our Banner states: OMEMEE AND DISTRICT HORTICULTURAL SOCIETY is
"Growing with our Community"!

Heather (President), Carol (Past President), Joanne & Diane (Vice Presidents)

Contents



Page 2	2012 Executive
Page 3	Committees for the Year 2012
Page 4	Committees for the Year 2012(continued)
Page 6	General Rules for the Exhibitors
Page 7	Basic Forms of Floral Arrangement
Page 8	Tips for Conditioning Flowers
Page 10	Specifications of Design & Display
Page 11	Tips for Showing
Page 12	Monthly Competition - Design Categories
Page 13	Monthly Competition - Photo Categories
Page 14	Spring Show - Monday May 21, 2012 – Trinity Church
Page 16	73nd Annual Flower & Vegetable Show - Monday, August 20, 2012 - Curling Rink
Page 21	Flower Show Awards 2011
Page 23	Junior Garden Club Awards –2011



2011 Executive

President

Heather Grassie

hgrassie@cogeco.ca

Past President

Carol Mitchell

carol@aflowergeek.com

Vice President (1st)

Joanne Windrem

Vice President (2nd)

Diane Webber

dianepwebber@gmail

Secretary

Barb Morrison

Treasurer

Darlene Hunter

Directors:

One Year

Donna Hunter

Christa Marton

Mary Read

Chris Miller

Suzanne Seryck

Two Years

Germaine Kleiss

Sue Lajeunesse

Gaynor McMullen

Barb Muscutt

Honorary Directors:

Ruth Arndt

Pat Burritt

Norma Evans

Brigitte Losberg

Auditors:

Jill Cockerell

John Penny



COMMITTEES FOR THE YEAR 2012

<u>Publicity & Yearbook</u>	Diane Webber	Gaynor McMullen Christa Marton
<u>Membership Awards</u>	Donna Hunter Ruth Arndt Barb Muscutt	Norma Evans
<u>Social</u> Trixie White		
<u>Chair Person</u>		
<u>Youth</u> - Linda Jenkins Heather Grassie	Anne Luxton Carol Mitchell Heather Grassie	Diane Webber Carol Mitchell
<u>Nominating Committee 2013</u>		
<u>Library</u>	Chris Miller Carol Mitchell Sue Lajeunesse	Heather Grassie
<u>Communities in Bloom Members Garden Tour Peterborough Garden Show - Competition</u>		
Donna Hunter <u>Chair Person</u> <u>Sunshine Girl</u>	Ruth Arndt Carol Mitchell Germaine Kleiss	Sue Lajeunesse Diane Webber
<u>Speakers</u>	Sue Lajeunesse Carol Mitchell Ruth Arndt Carol Mitchell Jill Cockerell Linda Jenkins Kim Gunn Darlene Hunter Linda Jenkins Gord Read Joanne Windrem	Christa Marton Germaine Kleiss John Penny Eila Martin Gaynor McMullen Eila Martin Mary Read Donna Hollingworth
<u>Archivist</u>		
<u>Auditors</u>		
<u>Flower Show May</u>		
<u>Flower Show August</u> Christa Marton <u>Chair Person</u>		
<u>Photography Show</u> <u>Plant Sale Spring</u> Suzanne Seryck <u>Chairperson</u>	Christa Marton Jill Cockerell Joanne Windrem Barb Morrison Colleen Hughes Chris Miller Hugh Burritt Donna Hunter Barb Muscutt Gord Read Sue Lajeunesse Eila Martin	Joyce Forward Diane Webber Christa Marton Debra Runco Pat Burritt Kim Gunn Aron Muscutt Ron Muscutt Mary Read Linda Jenkins Catha McMaster
<u>Committee 2012 (cont.)</u>		

Plant Sale Sept.

Linda Jenkins
Colleen Hughes
Suzanne Seryck

Cathy Sheehey
Evelyn Dolman

Pot Luck 2012

Carol Mitchell
Chair Person

Ann Luxton
Linda Jenkins
Donna Hollingworth
Diane Webber
Barb Muscott

Trixie White
Christa Marton
Joanne Windrem
Audrey Wristen

Social - Trixie White
Chairperson
Winter Barrels

Donna Hunter
Mary Read
Dorothy Edwards
Ron Faulkner
Diane Webber
Rose Schultz
Carol Mitchell
Jenn Lumley
Carol Mitchell

Joanne Windrem
Gord Read
Marie Bell
Sue Lajeunesse
Gaynor McMullen
Lynda Krishnan

Phone
Day Trips-

Christa Marton
Sue Lajeunesse

Public Gardens a.m.

Joanne Windrem
Chair Person

To be arranged in the
Spring

Public Gardens p.m.

Aron Muscott
Chair Person

To be arranged in the
Spring

Santa Claus Parade

Gaynor McMullen
Chair Person

Hugh Burritt
Ron Muscott
Christa Marton
Jill Cockerell
Pat Burritt

Barb Muscott
Donna Hunter
Sue Lajeunesse

Greeters

Hugh Burritt

Draws & Prizes

Trixie White

Signs

Donna Hunter

Heather Grassie





General Rules For the Exhibitors

Competition is open to all members of the Omemee Horticultural Society (over 16 years of age) *Membership paid prior to date of show.*

1. Entries with tags must be in place and showroom cleared by the specified time in show schedule. Entry tags may be obtained prior to the show. See Christa Marton
2. An exhibitor may make only *one entry* in each class unless the item is marked with an * in which case, two entries are allowed.
3. A houseplant may be shown only *once* each year. All potted plants must be owned by the exhibitor for at least 3 months.
4. All specimens must be grown by the exhibitor (does not apply to decorative/design classes)
5. In decorative/design classes accessories are permitted unless otherwise stated.
6. All specimen entries must be shown with their own foliage, except daffodils & daylilies.
7. Extra points may be given for naming specimen varieties.
8. Height refers to the average height of the specimen, not height of the entry.
9. Decorative entries' height is measured from tabletop to the design's highest point.
Note that the container is part of the measurement.
10. In decorative classes, a front view is indicated unless otherwise stated.
11. Judging will conform to OJES standard (Ontario Judging & Exhibiting Standards).
12. The judge's decision is final and may only be challenged in writing.
13. The Society is not responsible for loss or damage.



Basic Forms of Floral Arrangement



All Foliage



Oriental Manner



Asymmetrical Triangle



Crescent



Hogarth or S Curve



Hogarth



Water Showing



Vertical



Symmetrical Triangle



Horizontal

Tips for Conditioning Flowers

The goal is to assist plants to absorb water after cutting and thus have fresher, longer lasting specimens or arrangements.

Cut stems cleanly on a slant using a sharp, clean knife or shears. Early morning or late evening is preferred. Place immediately in deep warm water. Re-cut stems under water about an inch above the original cut. Flowers with woody stems such as hollyhocks, lilacs and shrub and tree branches should not be re-cut. Instead, slit the stems a few times.

Some flowers benefit from a spray of cool water before hardening. Some of these are Asters, Begonias, Lilacs, Carnations, Pansies, Violets and Roses. Do not spray Delphiniums, Lilies, Petunias, or Sweet Peas.

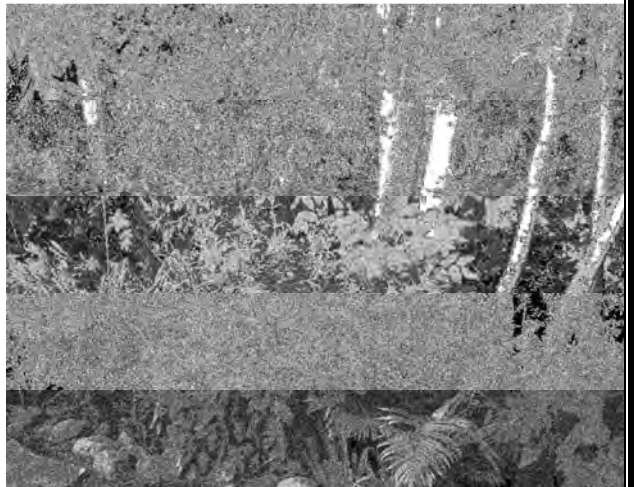
Strip off the leaves that will be under water. Lay large leaves, such as Hostas, flat in the water.

The stem ends of some plants should be seared or placed in an inch of boiling water for 1 to 3 minutes. This prevents the formation of a callus which restricts water intake. Plants that fall into this category are Poppies, Asters, Chrysanthemums, Zinnias, Dahlias, Sidalcea, Balloon Flower and Heuchera.

Condition Daffodils (Narcissus) separately, do not re-cut stem and rinse stem ends to remove sap if being used in any arrangement with other flowers.

Store pails of flowers in a cool dark and draft free area from 6 to 24 hours. Dahlias, Gladioli and Iris can be cut a few days ahead if hot or stormy weather **threatens**.





Specifications of Design & Display

1.	<p><u>A miniature design:</u> Not to exceed 5” in any dimension, including container, base & accessories. For good proportion the container should not exceed 1 ½” in height.</p>
2.	<p><u>A small design</u> Size from not smaller than 5 ½” and not exceeding 10” in any direction (height, width, depth, diagonal), including container, base & accessories</p>
3.	<p><u>A collection -</u> A specified number of items exhibited for cultural perfection OJES P. 93 NOTE: Freshness is paramount for cultural perfection A collection has no artistic value All things being equal the judge will award higher marks to the greatest variety of specimens.</p>

Prize Money and Points

	<u>1st</u>	<u>2nd</u>	<u>3rd</u>	<u>H.M.</u>
Decorative Classes	\$4.00	\$3.00	\$2.00	\$1.00
Other Classes	\$2.00	\$1.50	\$1.00	\$.50
Best In Show	\$5.00			
Judge’s Choice (optional)	\$5.00			

Points for all classes:

6	Best in Show & Judge’s Choice
5	1st
3	2 nd
2	3rd
1	Honourable Mention

Tips for Showing

If more than one flower is shown of the same variety, equal sizes and stages of development are considered to be superior entries.

Floating specimens should not have leaves and should truly float.

It is advisable to put the flower into the bowl at the show, not while in transit.

Always groom your specimen, removing all “eye-sores”: spent flowers, dirt, bugs etc.

Tulips

- erect stems (except for parrot tulips)
 - no more than 2 sets of leaves
 - single tulips $\frac{1}{4}$ - $\frac{1}{2}$ open, species (small) fully open
- Note: species close at night so might not show well.

Roses

- petals symmetrical, fresh
- singles fully open, other $\frac{1}{2}$ to $\frac{3}{4}$ open

Irises

- symmetrical form, sturdy stems
- the presence of terminal flower (the one on the top) is considered superior
- old flowers neatly trimmed off at the stem

Peonies

- singles should not have pollen falling
- all buds should be removed, as well as all lower leaves.

African Violets

- plant should be in centre of container, foliage symmetrical & overlapping -no long “necks”
- flowers concentrated near centre of plant
- miniature has leaf span 6” or less

Daffodils/Narcissi

- Foliage should not be included
- The beige sheath under the bloom (the spathe) should not be removed.
- Petals (the perianth) should generally be broad & flat with overlapping segments symmetrically arranged & not twisted.
- flower shows best at right angle to stem, except multi-blooms.

Monthly Competition - Design Categories – 2012

Note: Remember that a design is an *artistic* interpretation of the suggested theme and not just a pretty bouquet OJES p.95.

March 19	An arrangement using any natural material and featuring a rock. See notes below
April 16	Creating and wearing a spring bonnet (will be judged) Hat may be purchased
September 17	<i>“Windblown” a design indicating motion</i>
November 19	<i>“Holiday Season” an arrangement using natural materials. Paint enhancement, ribbons, candles etc. allowed</i>

Design material may be purchased

Note Older, drier greenery displaying a brownish tinge will not be awarded as many points as fresh ones

Arrangement:

Combination of fresh &/or dried plant material &/or inorganic objects arranged to produce an artistic unit. OJES p.90

Featured: Something in a design that is give prominence OJES p.97



Monthly Photo Competitions – 2012

	<u>Photo Categories</u>	
March 19	“(A) bird(s) in winter”	one 4” x 6” or 5” x 7” photo
April 16	“Spring bulb(s)”	one 4” x 6” or 5” x 7” photo
September 17	“An outdoor planter”	one 4” x 6” or 5” x 7” photo
November 19	<u>Annual Photo Show</u>	
	1. “Creepy Crawley”	one 4” x 6” or 5” x 7” photo
	2. “In the Veggy Patch”	one 4” x 6” or 5” x 7” photo
	3. “I made a difference” photo with short explanation attached to front	Or 2 photos (before & after) 4” x 6” or 5” x 7” photo
	4. Photographer’s Choice	must have Nature relevance
	5. “There’s much to love about winter”	a series of 4 photos
	<u>Tagged exhibits to be placed between 6:30 and 7:00 p.m.</u>	
	Topics for Photo Competitions 2013	
1	“Frog(s) or Toad(s)”	one 4” x 6” or 5” x 7” photo
2.	“Spiderweb”	one 4” x 6” or 5” x 7” photo
3.	“A Lake Landscape”	one 4” x 6” or 5” x 7” photo
4.	Photographer’s’ Choice	one 4” x 6” or 5” x 7” photo
5	“Fountains” – series	a series of 4 photos

Note: Traditional and digital photos will be displayed together!

Photography Rules

One entry per category.

Entries Nature related, photographed by exhibitor

Single prints must be 4” x 6” or 5” x 7”, mounted or matted

Note: Matting or mounting must not extend more than 1” past the photo without penalization. Series to be fastened to a backing of max. 12” x 24”.

Mini Show

Monday May 21, 2012 – Trinity United

Exhibits placement between 4:30 and 5:30 p.m.

Open to Public and Social Time 7:00 – 7:30 p.m.

1.	Tulip - single type - predominantly yellow	1 stem
2.	Tulip - single type - predominantly red	1 stem
3.	Tulip - single type - predominantly pink or purple	1 stem
4.	Tulip - single type - predominantly white/cream	1 stem
5.	Tulip - single type - bicolour or multi-colour	1 stem
6.	Tulip - any other type or colour not listed	1 stem
7.	Tulip - double	1 bloom
8.	Tulips - all alike	3 blooms
9.	Tulips - different	3 blooms
10.	Tulip – smallest----- <i>See tips for tulips P. 11</i>	1 bloom
11.	Daffodil – single, large yellow cup	1 stem
12.	Daffodil – single , large white cup	1 stem
13.	Daffodil - single, bi-colour	1 stem
14.	Daffodil - double	1 stem
15.	Daffodil - longest cup	1 stem
16.	Daffodil - miniature	1 stem
17.	Daffodils - same cultivars	3 stem
18.	Daffodils - different cultivars	3 stem
19.	Daffodil/Narcissus - any other - <i>See tips for daffodils P.8&11</i>	1 stem
20.	Doronicum – Leopard’s Bane	1 stem
21.	*Grape Hyacinths	3 stems
22.	*Iris – any type or colour	1 stem
23.	*Any other spring flowering bulb or tuber (named)	1 stem
24.	Flowering shrub – not exceeding 18” any direction (named)	1 branch
25.	Bouquet of violets or Johnny-jump-ups	
26.	*Any perennial/biennial under 15” average growth (named)	1 stem
27.	*Any perennial/biennial over 15” average growth (named)	1 stem
28.	Pansies – foliage attached	5 blooms
29.	*Houseplant grown for foliage (named)	1 container

	<i>Mini Show Monday May 21, 2012 (continued)</i>	<i>Page 2 of 2</i>
30.	*Houseplant grown for bloom, named – (not African violet)	1 container
31.	Asparagus	3 stalks
32.	Green onions – bulbs with tops trimmed 6-8”	3 bulbs
33.	Rhubarb – tops trimmed fan shaped 2”	5 stalks
34.	Horticultural related “brag” item (<i>will not be judged</i>)	
	<u>Design Class</u>	
35.	“Serenity” – <i>a design with visual use of water</i>	OJES P.108
36.	“Spring Delight” - <i>a vertical design using bulbs or flower</i>	
37.	“Close Encounter” - <i>a woodland design not exceeding 18” in any direction (incl. diagonal)</i>	
	<u>Photography Class</u>	Page 13 for Rules
38.	“In the woods”	one 4” x 6” or 5” x 7” photo
39.	“A close encounter”	one 4” x 6” or 5” x 7” photo

Note: An exhibitor may make only one entry in each class unless the item is marked with an * in which case two entries are allowed.

Note Re Designs

Remember that a design is an artistic interpretation of the suggested theme and not just a pretty bouquet! OJES P.95

Design material may be purchased



Vertical Design

73rd Annual Flower & Vegetable Show

Monday August 20, 2012

Curling Rink

**Tagged Exhibits placed Sunday between 3:00 p.m. and 5 p.m.
or Monday between 1 - 3:30 p.m. Judging - Monday 3:30-6:30 p.m.**

Show open to the public 6:30 p.m. -- Junior Awards 7:30 p.m.

	<u>Section A - Cut Flowers</u>	Page 1 of 4
1.	*Aster – any variety, any colour	1 bloom
2.	*Calendula	1 bloom
3.	*Clematis in low container, with foliage	1 bloom
4.	*Cosmos – large single	1 spray
5.	*Daylily (Hemerocallis)	1 stem
6.	*Geranium (Pelargonium) with own foliage	1 stem
7.	*Gloriosa, Black Eyed Susan (Rudbeckia)	3 blooms
8.	*Cone Flower (Echinacea)	1 stem
9.	*Hydrangea - any variety	1 stem
10.	Lavatera	1 spray or 1 stem
11.	Lily – tiger	1 stem
12.	*Lily (true lily) any other	1 stem
13.	Marigold - bloom under 2”	3 blooms
14.	Marigold - bloom 2” and over	1 bloom
15.	*Phlox – any variety	1 stalk
16.	Phlox – perennial, different varieties	3 stalks
17.	Phlox – perennial, same variety	3 stalks
18.	Salvia – perennial or annual	1 stem
19.	Sedum – not Autumn Joy	1 stem
20.	Snapdragon – any colour	3 stems
21.	Snapdragon – any variety	1 stem
22.	Sweet Peas – with foliage (perennial or annual)	3 stems
23.	*Zinnia – blooms under 3”	3 stems
24.	*Zinnia – blooms 3” and over	1 stem

	73rd Annual Flower & Vegetable Show	
		Page 2 of 4
25.	*Any other cut annual flower-<i>under 15 named</i>	1 stem
26.	*Any other cut annual flower-<i>15" and over -named</i>	1 stem
27.	*Any other cut biennial/perennial -<i>under 15"-named (no hydrangea)</i>	1 stem
28.	*Any other cut biennial/perennial -<i>15" and over- named (no hydrangea)</i>	1 stem
	<u>Section B – Bulbs, Corms & Tubers</u>	
29.	Dahlia – bloom under 2"--see OJES p.35	1 bloom
30.	*Dahlia – bloom 2" and over	1 bloom
31.	*Tuberous Begonia – floating in a bowl, no foliage	1 bloom
32.	*Gladiolus – any colour	1 stem
	<u>Section C – Roses (named if possible)</u>	see rose tips p. 11 or OJES p.58
33.	*Rose – miniature	1 bloom
34.	*Rose – miniature	1 spray
35.	Rose – miniature-different colours	3 blooms
36.	Rose any other type	1 spray or bloom
37.	Rose – floating in a bowl with no foliage	1 bloom
38.	Roses – arranged with own foliage only	3 stems
	<u>Section D – Collections - attach list of known names A collection must have at least 9 specimens in one container.</u>	<u>See Further specification p10</u>
39.	Perennials/biennials under 15" average growth	
40.	Perennials/biennials 15" & over average growth	
41.	Annuals -under 15" average growth	
42.	Annuals -15" & over average growth	
43.	Assorted cut flowers	

	<u>73rd Annual Flower & Vegetable Show</u>	Page 3 of 4
	<u>Section E -Novice</u> <u>– Members who are new exhibitors (2 year limit)</u>	
44.	My Best Annual	1 bloom or spray
45.	My Best Perennial/biennial	1 bloom or spray
	<u>Section F – Edibles (see specifications p.20)</u>	
46.	Beans – yellow, green or purple	3 pods
47.	Beets	3 specimens
48.	Carrots	3 specimens
49.	Corn – 1/3 husked	1 specimen
50.	Cucumbers – slicing	1 specimen
51.	Cucumbers - pickling	3 specimens
52.	*Garlic	1 head
53.	Herbs – named, potted or cut –(different)	3 or more
54.	*Onions – skin on	1 specimen
55.	*Peppers – any variety	1 specimen
56.	*Potatoes	1 specimen
57.	Squash – any variety	1 specimen
58.	Swiss Chard	3 specimens
59.	Tomatoes – large red	1 specimen
60.	Tomatoes – large yellow or orange	1 specimen
61.	*Tomatoes – orange, yellow or red, not over 1 1/2”	1 truss
62.	*Any other vegetable named, not listed above	1 specimen
63.	*Vegetable with unusual growth characteristics, named	1 specimen
64.	Zucchini – not over 12”	1 specimen
65.	*Any garden grown edible fruit - named	1 specimen or 5 berries
66.	Sunflower head with or without petals	1 specimen
67.	Novelty – decorated vegetable	1 specimen

	73rd Annual Flower & Vegetable Show	Page 4 of 4
	<u>Section G – Miscellaneous</u>	
68.	Horticultural brag item – (will not be judged.)	
69.	Patio pot – plant(s) named	
70.	Hanging basket – plant(s) named	
71.	*Gourd	1 Specimen
	<u>Section H – Photography</u>	P.13 for rules
72.	“Dead but still lovely” picture of a tree	
73.	“Kaleidoscope”- your interpretation	
74.	Photographer’s Choice - a series of 4 photos	
	<u>Section I – Design</u> <u>– Design material may be home grown or purchased</u>	P.12 for Rules
75.	“All Around” a circular design for a table	
76.	“Minimal” a miniature design	See below
77.	“Patchwork Quilt” a flat design in a dish	
78.	“Looking East” a design in an oriental manner	See below
79.	“Futuristic” your interpretation (accessories such as decorative wire allowed)	

A miniature design:

Not to exceed 5” in any dimension, including container, base & accessories.

For good proportion the container should not exceed 1 ½” in height

Oriental Manner – Minimalistic, using such spacing and curvatures that no stem or flower is obscured.

Special Awards

Best Specimen

Best Vegetable

Best Design

Judge's Choice (optional)

Specifications for Edibles

Beans: Pods should be well matched and of good colour, no spotting, portion of stem attached.

Beets: Tops trimmed 1" above crown, cleaned but not scrubbed, preferred size 2-3". Roots should not be cut.

Carrots: Tops removed to approx. 1" above crown. Tap Roots should be left on. Roots may be washed but not scrubbed. Remove Side roots carefully.

Cucumbers: 1/4" of stems should be left on specimen.

Slicing: 6" and over

Pickling: 2" - 4"

Tomatoes: Specimens should be well matched, firm and free of cracks. It is preferable to leave calyx attached.



**FLOWER SHOW AWARDS
2011
Congratulations**

Burke Memorial Award <i>Most points for roses in June and August Shows</i>	Kim Gunn
Moyer Memorial Trophy <i>Most points in August Show</i>	Sue Lajeunesse
Weir Award <i>Most points for vegetables in August Show</i>	Norma Evans
Sadler Award <i>Best vegetable in August Show</i>	Renee Cowels
Sanderson Award <i>Most points in May and June Shows</i>	Kim Gunn
Male Gardener of the Year <i>Most points in all shows</i>	Aron Muscutt
Dora Atwell Award <i>Best Specimen in August Show</i>	Sue Lajeunesse
Mabel Hill Award <i>Best Design in August Show</i>	Diane Webber
The OHA Anniversary Trophy <i>For Achievement in Horticulture</i>	Carol Mitchell
Zufelt Trophy <i>For Achievement in Horticulture</i>	Joanne Windrem Aron Muscutt
Photography Award	Aron Muscutt



Junior Garden Club 2011

2011 Junior Garden Club Awards Happy 65th Anniversary 1946-2011

The Taylor-Skuce Award <i>Best Garden - Class C</i>	Trevor Kennedy
Isabel Jones Trophy <i>Most points in show - Class C</i>	Trevor Kennedy
Edna Hopkins Award <i>For best garden - Class D</i>	Maria McQuade
Wesley Wilson Memorial Trophy <i>Most points in show - Class D</i>	Maria McQuade
Rikki Brannigan Award <i>Special Award</i>	Tyler Fitch
To celebrate the 65th Anniversary of the Junior Garden Club 1946-2011 the following money prizes were given to these Junior Gardens.	
Class A Sprouts - Best in Show – (Novelty) Judge's Choice – (Novelty)	Kyle Darling Cecelia Darling
Class B Seedlings -Best in Show - (See What I Grew) - Judge's Choice - (Novelty)	Larissa Marshall Raleigh Darling
Group C Buds -Best in Show (Arrangement in a Boot) - Judge's Choice - (Novelty)	Erik Darling Trevor Kennedy
Group D Bloomers- Best in Show (Green Beans) - Judge's Choice - (Sunflower)	Maria McQuade Samantha Kennedy
Best Beginning Gardener – Money Prize	Brooke Ellins
<i>A special award was presented for their unique entries celebrating the 65th Anniversary</i>	
Amber Gunn from the SPROUTS	
Erik Darling from the BUDS	
<u>CLASSES</u>	
Class A- the Sprouts	Pre-K-JK-SK
Class B - The Seedlings	Grade 1-Grade 2
Class C - The Buds	Grade 3- Grade 4
Class D – The Bloomers	Grade 5 and Up



We gratefully acknowledge the assistance we received in the year 2011 from the following sponsors.

Darling Insurance
City of Kawartha Lakes
Province of Ontario
Peterborough Horticultural Society
Omeme Farmers Club
Omeme Heights Greenhouses
Omeme Legion
Tully Lark

In Memorium

Beth McMullen

Bob Taylor

Vera Williams

Hazel Wilson



Rosemary

Coming Events 2012

	District 4	
March 17	District - <i>Spring Get Together</i>	Peterborough 1:00-3:30 p.m.
April 5-7	<i>Peterborough Garden Show</i> Peterborough Horticultural Society & Master Gardeners www.peterboroughgardens.ca	Peterborough Evinrude Centre
April 21	District 4 – <i>Annual General Meeting</i> - All Members Welcome-	Minden
June 13	District Lunch & Awards Celebration -	Naval Club Peterborough - 11AM - 3PM
Aug 17-19	<i>Ontario Horticultural Association</i> <i>106th Convention</i>	Niagara College, Grafton Campus
October 20	District - <i>Fall Seminar</i>	Westdale Church Peterborough
	<u>Around & About</u>	
1 st Tuesday in month 7.00 p.m.	<i>Peterborough Photographic Society</i> www.peterboroughcameraclub.com	Peterborough St. Andrews Church, 441 Rubridge
March 16-25	Canada Blooms	Direct Energy Centre
March – April	<i>Spring into Garden Series</i>	Port Hope
Apr. 12-15	<i>Success with Gardening</i> www.internationalhomeshow.ca	International Centre Airport Road
April	Seedy Saturday Lindsay Master Gardeners and Food Source Kawartha Lakes	Lindsay Queen St. United Church Hall 9-1
May 25-26-27	Lindsay Lilac Festival	Lindsay St. Lindsay

2012 Program

All meetings held in Trinity Church Auditorium *Unless otherwise specified*

The third Monday of the month – Social: 7:00 to 7:30 Meetings at 7:30



February 20	Growing Veggies in 2012	Speaker: Paula Anderson <i>paulaanderson@greenup.wastefree.on.ca</i>
March 19	<i>The Garden as A Therapeutic Space</i> <u>See Show Schedules: Page 12&13</u>	Speaker: Brian Nichols
April 16	Hydrangea 101 <u>See Show Schedules: Page 12 & 13</u>	Speaker: Terry Hotner <i>Hotnersgardencentre.com</i>
Saturday May 12	Spring Plant Sale	Curling Rink 9:00 a.m.
May 21 Coronation Hall	Growing Dahlias With Success <u>See Show Schedule – Page 14 & 15</u>	Speaker: Malcolm McDonald
June 18 On Site	Permaculture on your property	Speaker: Paula Anderson <i>paulaanderson@greenup.wastefree.on.ca</i>
July 16	9 th Annual Garden Tour of Members' Gardens	<i>Map and more information to follow</i>
Aug.20 Curling Rink	Growing Grasses Plus: Annual Flower & Vegetable Show <u>See Show Schedule -Pages 16 to 19</u>	Speaker: John Strathon <i>johnsgarden.ca</i>
TBA	<i>Tour to John's Garden</i>	
September 17	Taking Care of Your Trees Plus Plant Auction <u>See Show Schedule Page 12 & 13</u>	Speaker: Matt Logan
October 15 <i>Christ Church Anglican</i>	Annual Pot Luck Supper Slide Show “ Our year in review: activities of the Omeme Hort. Society”	
November 19	“Attracting & Feeding Birds” <u>See new show Schedules Page 12 & 13</u>	Speaker: Brenda Ibey <i>info@avantgardenshop.com</i> Annual General Meeting

e-mail: omemeegardenontario.org

Web Site: <http://www.gardenontario.org/site.php/omemee>